

State of Wyoming Corner Record

In compliance with the **CORNER PERPETUATION AND FILING ACT**, Wyoming Statutes, 1997 Section 33-29-140 et. seq. and the Rules and Regulations of the Board of Professional Engineers and Professional Land Surveyors)

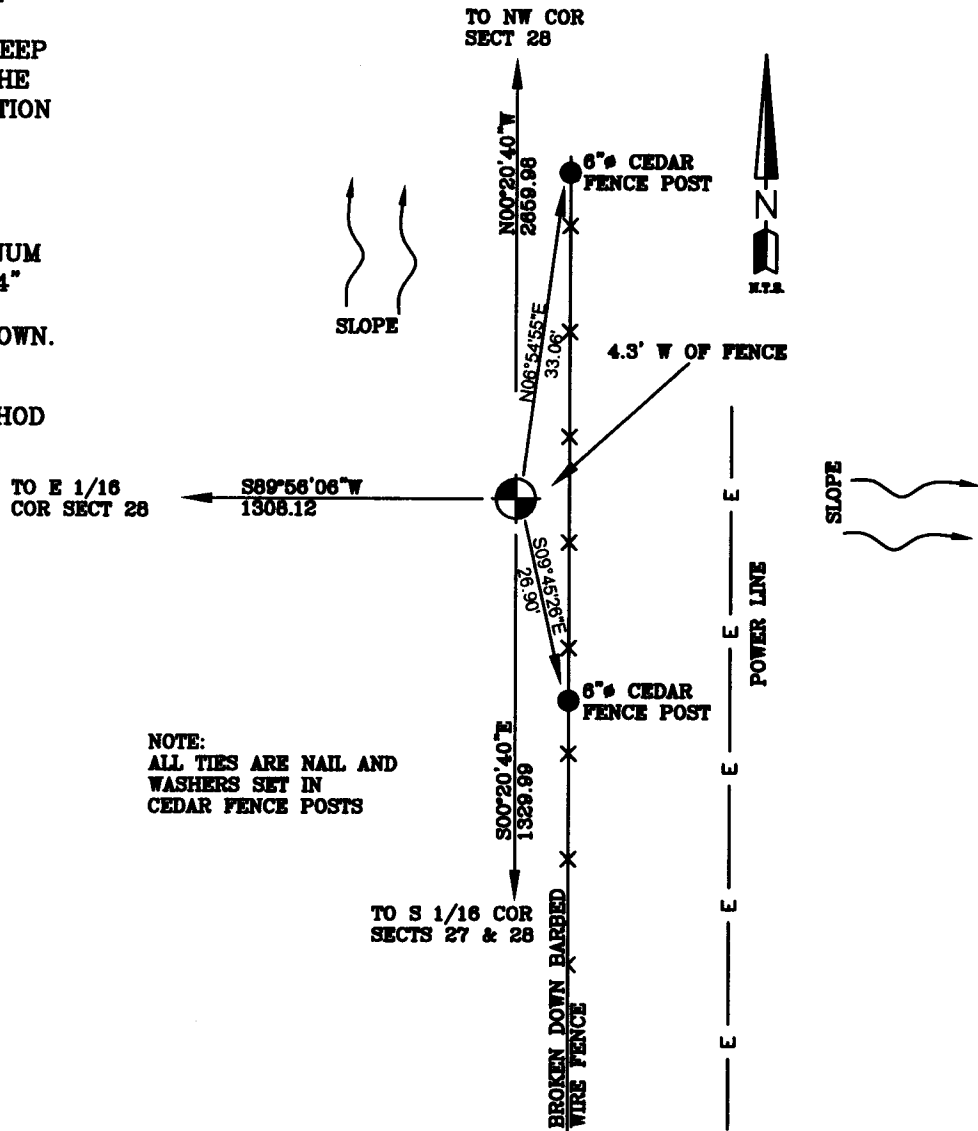
Reverse side of this form may be used if more space is needed.

Record of original survey and citation of source of historical information (if corner is lost or obliterated). Description of corner monumentation evidence found and/or monument and accessories established to perpetuate the location of this corner. Sketch of relative location of monument, accessories, and reference points with course and distance to adjacent corner(s) (if determined in this survey). Method and rationale for reestablishment of lost or obliterated corner.

G.L.O. RECORD:
 VARIATION 15°45'E
 NORTH ALONG THE LINE
 BETWEEN SECTIONS 27 AND 28
 40.00 CHAINS AND SET A
 LIMESTONE BOULDER
 16"X10"X4" BURIED 10" DEEP
 WITH "1/4" CARVED IN THE
 WEST SIDE FOR 1/4 SECTION
 CORNER

AT THE CORNER:
 FOUND NOTHING.
 PLACED A 2 1/2" ALUMINUM
 CAP SET ON A 5/8" X 24"
 REBAR FLUSH WITH THE
 GROUND STAMPED AS SHOWN.

CORNER WAS RESET BY
 SINGLE PROPORTION METHOD

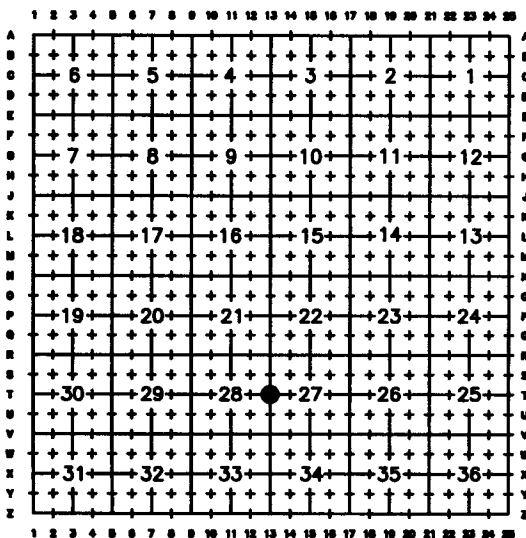


NOTE:
 ALL TIES ARE NAIL AND
 WASHERS SET IN
 CEDAR FENCE POSTS

Date of Field Work: 11/18/08

Office Reference: RABOU

Cross Index Plat



Firm/Agency, Address

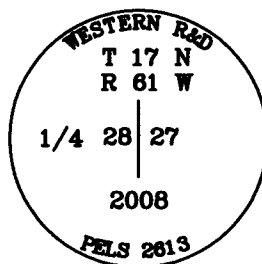
Western R&D, Ltd.
 5809 Yellowstone Rd., Suite B
 Cheyenne, Wyoming 82009

This corner record was prepared
 by me or under my direction
 and supervision.

SEAL & SIGNATURE

Telephone Number: (307) 632-5656

● Denotes Monument Set



Corner Name **EAST 1/4 CORNER** Section **28**, T **17 N**, R **61 W**, 6th P.M.
 County: **LARAMIE** Wyoming

Cross-Index No.: **T-13**

SBRPEPLS/PLSW: March 1994; PLSW January 1998

